

Jan./Feb. 2024

Volume 56, Issue 1 & 2

The Leaf – a monthly  
publication of GLC



Evangelical  
Lutheran Church  
in America



Gethsemane Lutheran Church  
The Leaf

35 East Stanton Avenue ♦ Columbus OH 43214 ♦ 614-885-4319

[www.gethsemane.org](http://www.gethsemane.org)

**Pastor**

Rev. TJ Lynch

[pastortj@gethsemane.org](mailto:pastortj@gethsemane.org)

**Music Ministries**

Nate Terry

[nterry@gethsemane.org](mailto:nterry@gethsemane.org)

**Youth & Family Ministry**

Ben Buss

[bbuss@gethsemane.org](mailto:bbuss@gethsemane.org)

**Handbell Choir Director**

Stephen Smith

[handbellguy@hotmail.com](mailto:handbellguy@hotmail.com)

**Child Care Director**

Sarah Allen

[sallen@gethsemane.org](mailto:sallen@gethsemane.org)

**Parish Secretary**

Diane Gutgesell

[glcoffice@gethsemane.org](mailto:glcoffice@gethsemane.org)

**Custodian**

Brian McLean

[bmac1745@aol.com](mailto:bmac1745@aol.com)

**In this Issue**

Rev. Reflections—P. 2

Youth & Family—P. 3-5

Ministry Teams—P. 6

Food Pantry Ministry—P. 7-8

January Activities—P. 9

Small Group Ministries—P. 10

Prayer Concerns—P. 11

Council Highlights—P. 12-13

Installation—P. 14

Serving Schedules—P. 15

Calendar—P. 16

## AN IRREGULAR CHRISTMAS

*Featuring the debut of the Major 7 Singers*



**SUNDAY, JANUARY 7TH - 4:00PM**

Free & open to the public, donations support  
Gethsemane Food Pantry

The third annual presentation of  
“An Irregular Christmas” is January 7 at 4:00PM.  
Nate Terry's Major 7 Singers, Gethsemane and St  
John Choirs will team up to raise money for the  
Gethsemane Food Pantry.

# REV. REFLECTIONS

---

New Year's Greetings, GLC!

There's something refreshing to me about the start of a new year: turning the page of my Thrivent wall calendar, writing in your brand new 2024 planner, thinking about all of the possibilities that lie ahead.

Have you ever stopped to think about *why* we celebrate New Year's Day? When you think about it, it's really just another day, so why is it so important for people to mark the change of the year on a calendar?



Perhaps it's because a new year offers a new beginning, that perfect opportunity to start fresh. Nate and I were

just joking the other day about preparing ourselves for the crowds of people coming to Planet Fitness, after all, there's a reason January is the most important month of the year for gyms and diet programs because it is the perfect opportunity to "start again," to improve yourself. I'll be honest – I'm not innocent of any of this. We're cutting back on carbs and sugar in our household and I just started training for my half-marathon in May.

What about for us as a people of faith, though? Our lives are changed because of Jesus, and each and every day we are given lots of opportunities for a fresh start; part of following Jesus *changing* what we've been doing, making 180-degree turn. So often in worship we begin our time together with the words of Confession, where we acknowledge to God and each other that we're not perfect and we're not living the way God desires.

Then, *immediately* after confession, we hear God's incredible words of grace, love, and *forgiveness*. We hear the *good news* God loves us *no matter what* – we all get a fresh start.

One of my favorite Psalms is Psalm 103, in which David is pouring out thanks for God's goodness. In verses 11-12 David says, "*For as the heavens are high above the earth, so great is [God's] steadfast love toward those who fear him; as far as the east is from the west, so far he removes our transgressions from us.*"

Friends, you don't have to wait for a new year to have a fresh start. Each day you have the opportunity to wake up and remember that you are a baptized child of God. You have been named, claimed, and set free by Jesus Christ. *New Year, but same forgiving and loving God!*

Here is to another year of Loving and Loving people together here at GLC so that all people can know and experience God's justice, inclusion, and grace!

**God loves each of you, and I do, too.**

**Peace,**

A handwritten signature in black ink, appearing to read "Rev. TJ Lynch".

**Rev. TJ Lynch**



## OVERVIEW

Last newsletter, I briefly mentioned that we are participating in the “Formation Co-Op” of the ELCA Youth Ministry Network. I wanted to let you know a bit more. This is a new program funded by a \$1,000,000 grant from the Lilly Endowment, and we’re in the first cohort of 10 congregations, which runs from September 2023 until June 2025. Additional cohorts will start each year. Our team is a joint group with Lord of Life, and our current members are: Emi Klukas, Mark Keller, Ben Buss, and Val Slaght (Youth Leader at Lord of Life). We’ll hopefully add a couple more youth from each congregation as we go. Each team is accompanied by an assigned Guide (who we meet with monthly via Zoom), and ours is Andrea Fluegel from Wisconsin, who is an ELCA pastor specializing in working with congregations in times of transition or “stuckness”, networking across differing faiths, and community partnerships.

The goal of the FORMATION CO-OP is to **root young people in a lifelong and transformative faith in Jesus that is experienced through life-giving communities**. In partnership with our Guide – and strengthened through intentional training – our team will draw from our 1) stories about youth ministry; 2) current realities facing youth and congregations; 3) congregational assets; and 4) congregational partnerships in order to develop a ministry plan from which we will experiment, learn, and share with the wider community over the course of two years. We’ll focus on adopting postures of:

- Accompaniment: We are in this together.
- Asset-based thinking and practices: By God’s grace, we have enough.
- Curious listening: We care about each other’s lives of faith.
- Bold Experimentation: We trust God to guide us to new ways of living faithfully,
- A diverse community of co-creators: We gratefully receive gifts of learning from others and generously share our experiences.

What does this mean? Initially, we’ll be visiting different groups in our congregations to ask questions and hear about your experiences of faith as a child, tween, teen, and young adult, how you currently engage and are nurtured by your faith, your dreams for youth ministry here, etc. Then our team has the task of distilling what we hear and discerning what might work in our context at this time. One of the first groups I want to meet with will be our current middle school and high school youth, because this process will directly impact them! We’ll also be meeting with a variety of existing groups at GLC over time.

The goal here isn’t to add lots of new programming, but to look at smaller tweaks we can experiment with to have a real impact – our Guide likes to call them “micro-experiments”. Val and I will be getting some training on this in New Orleans in mid-January before attending the ELCA Youth Ministry Network’s Extravaganza. The Extravaganza itself is a conference on children, youth, and family ministry during which we’ll attend workshops and network with our peers from across the ELCA!

You might be wondering about metrics for how we measure what is working. This isn’t about numbers, but about deepening faith and figuring out what resonates with our youth in our context, and hopefully what will give them a foundation upon which to build as they mature into adults. I look forward to this adventure with you, with the help of God! Watch for future updates. ☺

Also, please send me schedules for youth extracurricular activities: sports, band, drama, etc. **I’d love to come sometime!**



Grace and peace,  
Ben Buss (he/him/his)  
Youth and Family Ministry Coordinator  
[bbuss@gethsemane.org](mailto:bbuss@gethsemane.org)  
614-885-4319 ext. 13





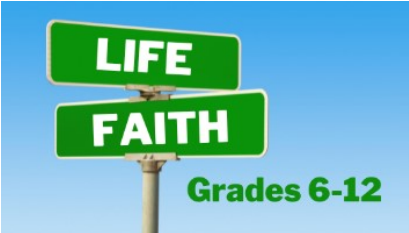

# YOUTH & FAMILY MINISTRY -- continued

## What's going on?

 <p><b>JANUARY 7<sup>th</sup> at 5:30PM</b></p>	<p><b><u>MIDDLE SCHOOL YOUTH GROUP EVENTS</u></b></p> <ul style="list-style-type: none"> <li>• <b>Sun. Jan. 7 from 5:30-7:30pm at the Surbella home!</b> We'll eat and have fun! It's a great time to invite a friend! ☺ Please RSVP to Ben for the address. Thank you!</li> <li>• <b>Sun. Apr. 14:</b> Tentative date for an event.</li> </ul>
	<p><b><u>GAME NIGHT FOR ALL AGES</u></b></p> <p><b>Sat. Jan. 13 at 6:30pm – GAME NIGHT for <u>ALL</u> ages</b> in the Great Hall. Bring your favorite game(s) to share. Invite your family, friends, and neighbors! ☺</p>
	<p><b><u>MARTIN LUTHER KING JR WEEKEND</u></b></p> <p><b>No Sunday School on Sunday January 14.</b> I encourage everyone to observe the MLK Jr holiday as “a day on, and not a day off”. On Mon. Jan. 15, there is an open house at the King Arts Complex (12p-4p) and Ohio History Connection has interactive stations for ages 2-12 (from 12-3:30pm). See: <a href="https://www.seedsofcar.org/events/2024-cbus-mlk-day-of-service">https://www.seedsofcar.org/events/2024-cbus-mlk-day-of-service</a> Registration is recommended for the free event at Ohio History Connection: <a href="https://www.ohiohistory.org/events/martin-luther-king-jr-day/">https://www.ohiohistory.org/events/martin-luther-king-jr-day/</a></p>
	<p><b><u>GETHSEMANE GABS:</u></b></p> <p><b><u>IS THIS NORMAL? TEENS, EMOTIONS, &amp; SUBSTANCE USE</u></b></p> <p><b>Tue. Jan. 23 at 7pm-8:15pm</b> – discussion with Tricia Lerndon, LISW-S, LICDC and Abby Surbella, MEd, LPCC. There will be a presentation with plenty of time for Q&amp;A. In the Great Hall. Please promote to any friends who might be interested. Facebook event: <a href="http://tiny.cc/ggabs">http://tiny.cc/ggabs</a></p>
	<p><b><u>HIGH SCHOOL YOUTH EVENTS</u></b></p> <p>with Ascension, Gethsemane, IYK, and Lord of Life</p> <ul style="list-style-type: none"> <li>• <b>Sat. Jan. 27 overnight to Sun. Jan. 28, 2024 – Lock-in</b> at Gethsemane. Times TBD.</li> <li>• <b>Sun. Mar. 10, at 5:30pm-7:30pm</b> – hosted by Ascension, 1479 Morse Rd, Columbus, OH 43229.</li> <li>• <b>Sun. Apr. 21, at 5:30pm-7:30pm</b> – Location and details TBD.</li> </ul>
	<p><b><u>ELEMENTARY OVERNIGHT RETREAT</u></b></p> <p><b>Fri. Feb. 16 overnight to Sat. Feb. 17 – “FUN-IN-FAITH” Elementary Retreat</b> for Grades 2-5 at HopeWood Pines (Lutheran Memorial Camp). Please let Ben know if you are going. Carpool leaves GLC at 6pm Friday and returns at 4:45pm Saturday. Register at: <a href="https://hopewoodoutdoors.org/program/fun-in-faith/">https://hopewoodoutdoors.org/program/fun-in-faith/</a></p>
	<p><b><u>INTERGENERATIONAL ACTIVITY</u></b></p> <p><b>Sun. Feb. 18 following worship</b> – this holiday weekend is the first Sunday in Lent. If anyone would like to help me plan an intergenerational craft, discussion, or other activity for this Sunday, please let Ben know.</p>



# YOUTH & FAMILY MINISTRY -- continued

	<p><b><u>MAPLE SYRUP FESTIVAL – ALL AGES WELCOME</u></b></p> <p><b>Sun. Feb. 18 following Sunday School</b> – Carpool leaving GLC at Noon and returning around 3:30pm. All you can eat pancakes, maple sausage, and live music from a local band. See how maple syrup is made. Relax by the fire or take a hike. There will also be local vendors. At HopeWood Pines (Lutheran Memorial Camp), with proceeds funding camperships to help send kids to camp. ☺</p> <p>Free admission with meal costs \$12 ages 10-Adult, \$8 for ages 3-9, and free for age 2 &amp; under.</p>
	<p><b><u>CONFIRMATION RETREAT</u></b></p> <p><b>Fri. Mar. 15 overnight to Sat. Mar. 16</b> at HopeWood Pines (LMC). Cost is reduced to \$25 <i>if you use coupon code that we emailed you</i>. Carpool leaves GLC at 6pm Friday and returns at 4:45pm Saturday. Register at: <a href="https://hopewoodoutdoors.org/program/confirmation-retreats/">https://hopewoodoutdoors.org/program/confirmation-retreats/</a></p>
	<p><b><u>FAMILY SPRING RETREAT (ALL AGES WELCOME)</u></b></p> <p><b>Fri. Apr. 19 (7pm) overnight to Sat. Apr. 20 (6:30pm)</b> – Family Spring Retreat for <u>families of all ages</u> at HopeWood Pines (Lutheran Memorial Camp). Let Ben know if you are going. Register at: <a href="https://hopewoodoutdoors.org/program/family-spring-retreat/">https://hopewoodoutdoors.org/program/family-spring-retreat/</a></p>
 <p><small>Copyright © 2018 Sparkhouse. Posted by permission. No further posting or reproduction allowed without written permission of the publisher.</small></p>	<p><b><u>CHILDREN'S SUNDAY SCHOOL (Kindergarten – Grade 5)</u></b></p> <p><b>Sundays 11AM-Noon, starting in Room 212</b>, our children gather to sing songs and pray together before splitting into two classes (Grades K-2 and Grades 3-5) to learn about a Bible story from one of the assigned lectionary.</p> <p><b>*** Weekly except Jan. 14 and when there are all-ages activities. ***</b></p>
  <p><small>Image: Sparkhouse/1517 Media</small></p>	<p><b><u>CONFIRMATION / MIDDLE SCHOOL (Grades 6-8)</u></b></p> <p><b><u>&amp; HIGH SCHOOL (Grades 9-12) SUNDAY SCHOOL – SUNDAYS 11AM-Noon</u></b></p> <ul style="list-style-type: none"> <li>• <b>CONFIRMATION with Pastor TJ (room 207):</b> Learn about the basics and roots of our Christian faith and what it means to be Lutheran. *** Meets Jan. 28; Feb. 11 &amp; 25; Mar. 10 &amp; 24; Apr. 7 &amp; 21; May 5. ***</li> <li>• <b>HIGH SCHOOL with Mark (room 213):</b> Dig into the Bible together. *** Meets Jan. 28; Feb. 11 &amp; 25; Mar. 10 &amp; 24; Apr. 7 &amp; 21; May 5. ***</li> <li>• <b>COMBINED MIDDLE SCHOOL &amp; HIGH SCHOOL with Ben (room 213):</b> We'll start out talking about "Intersections" between faith and everything else, such as current events, pop culture (music, movies, TV), everyday life, etc. Our youth will shape this over time. *** Meets Jan. 7 &amp; 21; Feb. 4; Mar. 3 &amp; 17; Apr. 14 &amp; 28; May 12. ***</li> </ul>

Looking ahead:

- **June 10-13 – Vacation Bible School** ← Mark your calendars now! ☺

\*\*\* Watch your email and future newsletters for additional details for these events and others! \*\*\*

# MINISTRY TEAMS

---

## Properties

The sanctuary sound system replacement and enhancement has been completed. New and additional microphones have been installed, a new sound board has been installed, many yards of new cable have been run, and two new speakers replace the former obsolete ones. This system provides much improved sound for in-person worship, for broadcasting and recording the services, and for the phonic ear system. We acknowledge with much gratitude the many hours spent by Paul Siebert on installing the system.

## Music Ministry

As we gear up for the 2024 music season, please consider participating in the handbell choir, adult choir, praise band, or share a solo during worship. Be it long-term, short-term, or even just a substitute ringer for bells every now and then, we can find a place for you! While handbell or choral experience isn't necessary to join an ensemble, music reading skills are. (If you need a brush up on your reading skills, Nate and I can help you out on that over the summer.) If you have any questions, reach out to Stephen Smith, Handbell Director, ([handbellguy@hotmail.com](mailto:handbellguy@hotmail.com)) or Nate Terry, Director of Music Ministry, ([nterry@gethsemane.org](mailto:nterry@gethsemane.org)) or any of our wonderful ringers or singers.



Join ALL AGES of adults for the study of the “WINTER” of our lives. The class starts at 11:00am. Sunday, January 7, and ends February 11, 2024. This is from a series of four (Spring, Summer, Autumn, and Winter) seasons of life all of us will go through at some time. The series was written by Dick and Judy Reuning who were long time members, teachers, and very active people at Gethsemane. It was written and taught at GLC in 2006 era BUT it still will provide very good information and fantastic discussion for all of us. We decided to start with Winter since GLC has a pretty large WINTER age population, but ALL AGES of adults are encouraged to attend the sessions and participate in the discussions. What will life be like as we go through the Seasons of our lives? How can we

help each other - friends, families, our parents, ourselves? Mark Geary remembers the first time we did this and he said “the discussions were great.” Come see, hear, and participate!

# FOOD PANTRY MINISTRY

---

Gethsemane is a busy hub of activity during the Food Pantry distribution hours from 4 – 6 pm on Wednesday evenings. Cars start appearing in parking spaces by mid-afternoon, and, by the time the Pantry opens, clients have filled all the parking spaces in front of the church, as well as along the side, with some folks parked in the back. The number of families served each week has been about 70 – 75, with 83 being the all-time high.

The majority of the Food Pantry activity actually occurs throughout the week in preparation for the Wednesday distribution hours. In a typical week:

- On Sunday, a volunteer checks with the Graceland Kroger to see if they have any day-old bread or baked goods that can be stored in the pantry freezer (If space permits).
- On Tuesday, a couple of volunteers travel to the Mid-Ohio Foodbank to pick up boxes of produce and other items that are available there.
- Another volunteer picks up surplus frozen meat that the Worthington Resource Pantry has obtained from various retailers.
- In addition, a volunteer picks up baked goods and other food items donated by a Whole Foods store.
- Also on Tuesday, a couple of volunteers work downstairs to restock the pantry shelves and set up tables in the Multipurpose Room arranged with a variety of food and personal care products.
- On Wednesday, volunteers make another trip to the Mid-Ohio Foodbank to pick up additional produce, dairy items, and baked goods. (The items available vary day to day.)
- Also on Wednesday, a volunteer picks up food items donated by the nearby Aldi grocery store.
- By about 3 pm on Wednesday, volunteers arrive at church to finish up final preparations for the official pantry hours.
- On Thursday or Friday, a volunteer picks up 16 crates of milk (64 gallons) and 8 boxes of eggs (120 dozen) from the Mid-Ohio Foodbank in preparation for the next Wednesday's open pantry.
- Every other Friday, a group of volunteers arrive at church to unload and put away about 3500 pounds of dry goods delivered by the Mid-Ohio Foodbank truck.

Obviously, the role of volunteers is essential to the operation of the GLC Food Pantry! The official Gethsemane team members are Judy Kulikowski, Dave Kulikowski, Rick Nelson, and Jane Sieberth. They are supplemented by a solid group of volunteers from Gethsemane and the community, some of whom help weekly, while others help bi-weekly or monthly or as needed.

From Gethsemane: Pr. TJ, Lindalee Brownstein, Rowan Fleming, Mel Hampton, Carol Klukas, Diane Langner, Rick Langner, Cindy Keller, Mark Keller, Don Mazza, Sharon Minot, Jack Minot, Bob Patton, Jan Patton, Cathy Jung, Michael Jung, Dorian Nordstrom, John Norris, Jessica Renwick, Gerrit Woods, Jill Woods, and Steve Gutgesell.

From the community: Amy Clawson, Marvin Brotherton, Joe Frazzini, Steve Jennings, Jesse Powers, Larry Smith, Joe Saverimuttu, Chong Viles

*continued*

# FOOD PANTRY MINISTRY -- *continued*

---

In addition to the regular Wednesday food distribution, thanks to contributions from congregation members, several special distributions have been made to Food Pantry clients this fall/winter:

- In August, 41 children were supplied with backpacks and school supplies.
- In November, 46 families received turkeys and Thanksgiving side dish fixings.
- In December, 26 children were given Christmas gifts.

Thanks to a special donation, three new bicycles were raffled off to Pantry children in December.

Since a couple of major grants expired in April 2023, finances have been somewhat tight, but several smaller grants and generous contributions from congregation members, along with selective purchasing, have kept the Pantry shelves full. The new grants recently were from the Emergency Food and Shelter Program Phase 40, American Electric Power, and Kroger. Dave and Judy Kulikowski continue to apply for grants, and we are currently awaiting word on several pending applications.

Various community groups have also contributed money and supplies to the Pantry:

- The Cecily Ensemble performed a beautiful concert in October, with donations directed to the Food Pantry.
- Play and Learn parents and staff donated a wonderful collection of food and personal care items in November.
- A local volleyball club plans to deliver their collection of food and other items this week.
- Students from the Clintonville Academy plan to deliver their collection of diapers and personal care items in January.

It is clear from the number of families who come to the Pantry each Wednesday that this mission is serving a need in the community. It is also clear that the Gethsemane congregation strongly supports this mission and that many community members are also eager to help.

Respectfully submitted,  
Jane Sieberth



**From the local volleyball club.**



**From Play & Learn students and parents.**



# JANUARY ACTIVITIES

---

## **Irregular Christmas Concert – Sunday, January 7, 4:00pm**

The third annual presentation of “An Irregular Christmas” will be January 7 at 4:00pm.

Nate Terry's Major 7 Singers, Gethsemane and St John Choirs will team up to raise money for the Gethsemane Food Pantry.

## **Pub Theology – Tuesday, January 9, 7:00pm**

Due to the holiday Pub Theology is bumped to the 2<sup>nd</sup> Tuesday in January – January 9 at 7:00pm.

Starting in February, Pub Theology will meet only once a month on the 1st Tuesday rather than twice a month.

## **Game Night – Saturday, January 13, 6:30pm**

**All ages** are invited to participate in Game Night on Saturday, January 13, at 6:30pm. Come enjoy some fun, fellowship, and food.

Bring a snack, your favorite game, a friend, and your game playing spirit. Beverages will be provided.

## **Book Group – Tuesday, January 30, 7:00pm**

The Gethsemane Book Group meets on Tuesday, January 30, at 7:00pm in the church library to discuss *The Vanishing Half* by Brit Bennett. Carol Prigan will lead the discussion. All are welcome.

## **Gethsemane Gabs – Tuesday, January 23, 7-8:30pm**

Tue. Jan. 23 from 7:00-8:30pm – **Gethsemane Gabs: “Is This Normal? Teens, Emotions, & Substance Use”** discussion with Tricia Lerndon, LISW-S, LICDC and Abby Surbella, MEd, LPCC. There will be a presentation with plenty of time for Q&A. In the Great Hall. Please promote to any friends who might be interested.

Facebook event: <http://tiny.cc/ggabs>

# SMALL GROUP MINISTRIES

## Small Group Ministries

### Book Group

Sharon Walton

[skrwalton@gmail.com](mailto:skrwalton@gmail.com)

Barbara Ford

[bandbford@columbus.rr.com](mailto:bandbford@columbus.rr.com)

### Care Groups

Contact the church office if you wish to start a new one

### First Reflections

#### Monday Bible Study

Mark Keller

[mhkeller11@columbus.rr.com](mailto:mhkeller11@columbus.rr.com)

### LWR Quilts

Terri Siebert

[tsiebert@columbus.rr.com](mailto:tsiebert@columbus.rr.com)

### Men's Breakfast

Bob Davis

[ridjr38@gmail.com](mailto:ridjr38@gmail.com)

### Midweek Connections

Pastor TJ

[pastortj@gethsemane.com](mailto:pastortj@gethsemane.com)

### Prayer Shawls

Emilie Hagerdorn

[rdhekh@yahoo.com](mailto:rdhekh@yahoo.com)

### Pub Theology

Pastor TJ

[pastortj@gethsemane.org](mailto:pastortj@gethsemane.org)

### Habitat for Humanity

the A-Team

[jsiebert@columbus.rr.com](mailto:jsiebert@columbus.rr.com)

## REFLECTIONS

Every Monday at 8:00am  
on ZOOM



## Midweek Connections

Every Wednesday  
at 10:00am in the  
church library.



## Men's Breakfast

Second Saturday of the month  
at 9:00am at TeeJaye's



**Habitat**  
for Humanity®  
Greater Columbus  
MidOhio

Tuesday, Thursday, and some  
Saturdays from 8-3:00pm.



## PUB THEOLOGY

BEER, CONVERSATION & GOD

all perspectives welcome

1st  
Tuesdays



Gethsemane Lutheran Church



Saturdays to be announced  
from 9-12:00pm.



## BOOK GROUP

Last Tuesday of the month at  
7:00pm  
in the church library.



Second Monday of the month  
At 1:30pm in the library.



## January

- 1 David Lagerberg
- 2 Sue Herner
- 4 Joy McLemore
- 5 Bob Davis
- Wendy Luedke
- 8 Lauren Lynch
- 9 Parker Burdette
- 10 Steve Gutgesell
- 11 Debby Miller
- 18 Christy Feldman
- 22 Jan Patton
- 24 Lucia Murphy

## February

- 1 Bill Seifarth
- Sharon Walton
- Don Mazza
- 8 Sharon Monot
- 11 Lew Jones
- 14 Cindy Baer
- Andrew Keller
- 17 Alice Gerken
- 21 Jan Davis
- 22 Emi Klukas
- 24 Patty Gerken
- 25 Diane Spink
- 26 Dorian Norstrom
- 27 Claire Bullwinkle
- Bob Patton

## Our Prayers and Concern Are With . . .

*“Pray in the Spirit at all times in every prayer and supplication. To that end keep alert and always persevere in supplication for all the saints.” Ephesians 6:18*

**New concerns:** Dewey Smith (brother-in-law of Laurie Burnett) ... Norma Nickelson (friend of Carole Wilkins) ... Sandy Pawsey (mother of Anna Wildermuth) ... Nate (cousin of Denise Sager).

**Our love and compassion to the family of Rita O’Neil Wilson** (mother of Lindalee Brownstein) who passed away December 28.

**Members with ongoing concerns:** Don Cumberland ... Howard Feole ... Tyler Hagerdorn ... Don Huiner ... David Lagerberg ... James Laspisa ... Rick Nelson ... Denise Sager ... Doug Sand.

**Friends and family with concerns:** Kandace Crawford (granddaughter of Rick Nelson) ... Chuck Fuller (friend of Stephen Smith) ... Cindi McCullum (sister of Char Jessie) ... Carl Johnson (brother-in-law of Joanne Leussing) ... JR Lynch (brother-in-law of Joe and Bonnie Reilly) ... Jeff Smith (brother of Pam Hagerdorn) ... Laura Leussing (daughter-in-law of Joanne Leussing) ... Mary Jo Muhlencamp

(sister of Alice Siddall) ... Melba Byrne, Brock Rapp, Mike and Steve Smith (friends of Liz Melick) ... Patsy Seifarth (mother of Bill Seifarth) ... Bradley Albright (son-in-law of Howard and Nancy Feole) ... Matthew Swallow (son of Beth Berkani) ... Bryan and his children Kastyn and Holden Weirick (nephew of Jan Davis) ... Rod Hirschfeld (brother of Alice Siddall) ... Barb Galvin (sister of John Woods) ... Barbara Kirsop (mother of Doug Kirsop) ... Marsha Wynn (friend of Bob and Jan Davis).

**Homebound:** Bob Cerny (Danbury Senior Living-Westerville) ... Barb Driver (Home) ... Gene Fisher (Home) ... Alice Gerken (Mayfair Village) ... Elaine Haines (The Ashford at Sturbridge) ... Don Huiner (Danbury Senior Living-Columbus) ... Becky Oldaker (Bennington Glen).

## Would you like to add a name to the prayers?

Contact the church office at 614-885-4319 or [glcoffice@gethsemane.org](mailto:glcoffice@gethsemane.org).



# COUNCIL HIGHLIGHTS

---

## Congregation Council

### OFFICERS:

**President**

**Bill Darlage**

[darlage\\_bill@hotmail.com](mailto:darlage_bill@hotmail.com)

**Vice-President**

**Joel Wildermuth**

[jtwildermuth@gmail.com](mailto:jtwildermuth@gmail.com)

**Secretary**

**Karen Obee**

[karen.obee@gmail.com](mailto:karen.obee@gmail.com)

**Treasurer**

**Roland Hornbostel**

[rolandhorn@aol.com](mailto:rolandhorn@aol.com)

### MEMBERS AT LARGE:

**Mike Shugert**

[michaeldshugert@hotmail.com](mailto:michaeldshugert@hotmail.com)

**Gary Rader**

[grr71160@gmail.com](mailto:grr71160@gmail.com)

**Tammy Bullwinkle**

[tammybullwinkle@gmail.com](mailto:tammybullwinkle@gmail.com)

**Mike Siddall**

[msiddall@columbus.rr.com](mailto:msiddall@columbus.rr.com)

**Sam Gibson**

[stgibsoniii@hotmail.com](mailto:stgibsoniii@hotmail.com)

## Highlights of Council Meeting – December 18

Copies of the Council Minutes and Financial Report are posted in Atrium Way.

### OFFICERS REPORTS

#### Pastor's Report

Pastor TJ thanked Michelle for her leadership as council president. He reflected on his second year as pastor of GLC. He is proud to be Pastor of our congregation. Looking forward to the years ahead and the work of being the heart, hands and feet of Christ out in the world. Attendance this Sunday was 126 and the no rehearsal nativity went great. He highlighted how important worshiping together is to our community.

#### President's Report

Michelle thanked everyone for the year together serving on council. She felt privileged to serve with all of the council members together. There will be a Play and Learn meeting with the committee and council members to help establish more clear relationships amongst these groups.

Volunteer recognition—Michelle brought up the idea of recognizing Paul Siebert as an outstanding volunteer especially for his work on installation of the sound system.

**Joel moved** to allocate \$400 of the staff Christmas gift funds to Paul Siebert in recognition of tremendous contribution of time and expertise in 2023. Seconded by Pastor TJ. Motion **Passed**

Council explored the possibility of honoring other volunteers in the GLC community. Some feel there should be some way to honor our volunteers on a regular basis. This idea will be explored going forward.

Staff Christmas gift allocation—Kelly **moved** to allot the Congregational contributions of Christmas staff gifts based on hours. Pastor TJ, Sarah and Brian getting 1 share. Diane .8 Share. Ben and Nate .5 share and Steven .125 Share. Seconded by Bill. Motion **Passed** (Pastor TJ abstained from the vote)

#### Secretary's Report

Karen presented the minutes from last month's meeting for approval and Joel **moved** to approve last month's minutes. Seconded by Kelly. Motion **Passed**.

Joel **moved** to approve the minutes from the congregation meeting seconded by Kelly. Motion **Passed**

*continued*



# COUNCIL HIGHLIGHTS--*continued*

---

## Treasurer's report

Contributions were \$1800 favorable to the budget for November. For the year, contributions are favorable by approximately \$8,500. Income in November was almost equal to expenses. The bookkeeper is out until December 26th. Play and Learn is expected to have another positive balance this month. Pastor TJ will send out a letter for end of year contributions.

## **NEW BUSINESS**

IYK- IYK is now a synodically authorized community (SAC) and is no longer considered a mission of GLC. The SAC designation means they are expected to work toward becoming an independent incorporation. GLC and IYK will need to navigate the transition together. Going forward GLC will need to reconnect and re-acquaint ourselves with the history of this relationship and figure out how to best move forward making both theirs and our ministry the best they can be. Council will consider legal consultation to help with this transition.

## Infant Toddler House

As Property Co- Manager, Bill Darlage **moved** that Council authorize the Property Co-Manager to spend up to \$10,000 from the Other Funds account (PPP/ERC funds) for the purpose of paying pre-construction expenses incurred in preparing for the Infant House remodel, such expenses to be documented with receipts for payments approved. Jim seconded. Motion **Passed**.

## **Additional Motions**

### Infant Toddler House Renovation

Via Email on December 2nd 2023 Bill Darlage **moved** that Council approve entering a contract with R.R.Isler Construction for preconstruction services in the amount of \$1,250 and approve the use of PPP/ERC funds for payment. Seconded by Jim Siebert. Motion **Passed**.

### Nominating Committee Recommendations

Via email on December 2nd 2023 Bill Darlage **moved** that Council approve the following recommendations of the Nominating Committee. Seconded by Jim Siebert. Motion **Passed**.

Don Seidelmann: Assistant Treasurer

Mark Geary: Financial Secretary

Rick Langner: Assistant Financial Secretary

Bill Darlage: Property Co-manager

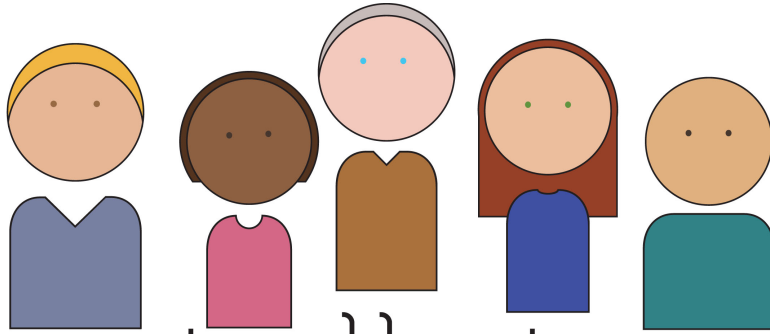
Dave Kulikowski: Personnel Committee

Motion **Passed**.

### Major Musical Work Fund 2024

Via Email on December 8th 2023 Roland Hornbostel **moved** that the Council approve the two major musical works events as proposed by GLC's Director of Music Ministries for Calendar Year 2024 at a per event cost not to exceed \$1000 per event plus 40% of the freewill offering at each event funded by the Special Fund for Major Musical Works rather than GLC's operating

Respectfully submitted by Karen Obee



# Installation of Officers

**Sunday, January 14  
During 9:30am worship**

**OFFICERS:**

**President**  
Bill Darlage

**Vice-President**  
Joel Wildermuth

**Secretary**  
Karen Obee

**Treasurer**  
Roland Hornbostel

**MEMBERS AT LARGE:**

Mike Shugert

Gary Rader

Tammy Bullwinkle

Mike Siddall

Sam Gibson

## **Mission Statement**

Love God. Love People.

## **Vision Statement**

A Christ-centered community  
empowered by and overflowing with  
God's justice, inclusion, and grace.

# SERVING THIS MONTH – JANUARY 2024

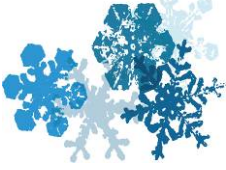
	Jan 7 9:30 AM	Jan 14 9:30 AM	Jan 21 9:30 AM	Jan 28 9:30 AM	Feb 4 9:30 AM
<b>Assisting Minister</b>	Roland Hornbostel	Roland Hornbostel	Michael Shugert	Michael Shugert	
<b>Projectionist</b>	Paul Siebert	Paul Siebert	Paul Siebert	Paul Siebert	Paul Siebert
<b>Readers</b>	Michelle Castrogiovani Bob Davis	Don Dell Barbara Ford	Hugh Geary Joyce Geary	Mark Hagerdorn Heidi Hiller	Roland Hornbostel Char Jessie
<b>Greeters</b>	Sam Gibson Mary Gibson	Jim Siebert Diane Langner	Brian Burdette Parker Burdette	Heidi Hiller Abby Surbella	
<b>Ushers</b>	Hugh Geary Joyce Geary	Tim Mayer Andrea Mayer	Mark Hagerdorn Pam Hagerdorn	Bill Darlage Mark Geary	
<b>Communion Bread Bakers</b>	Cathy Jung	Joanne Leussing	Carole Wilkins	Brian Lutz	Cathy Jung
<b>Communion Care</b>	Terri Siebert	Terri Siebert	Alice Siddall Mike Siddall	Alice Siddall Mike Siddall	Diane Langner

# SERVING THIS MONTH – FEBRUARY 2024

	Feb 4 9:30 AM	Feb 11 9:30 AM	Feb 14 (Lent) 7:00 PM	Feb 18 9:30 AM	Feb 25 9:30 AM
<b>Assisting Minister</b>					
<b>Projectionist</b>	Paul Siebert	Paul Siebert		Paul Siebert	Paul Siebert
<b>Readers</b>	Roland Hornbostel Char Jessie	Mark Keller Doug Kirsop		Jeff Klukas Judy Kulikowski	Joanne Leussing Joy McLemore
<b>Greeters</b>					
<b>Ushers</b>					
<b>Communion Bread Bakers</b>	Cathy Jung	Joanne Leussing		Carole Wilkins	Brian Lutz
<b>Communion Care</b>	Diane Langner	Mike Siddall Alice Siddall	Diane Langner	Mary Gibson Jane Sieberth	Mary Gibson Jane Sieberth

If you are interested in serving in some capacity – assisting minister, reader, usher, greeter, communion care, please contact the church office at [glcoffice@gethsemene.org](mailto:glcoffice@gethsemene.org).

# JANUARY 2024

Sunday	Monday	Tuesday	Wednesday	Thursday	Friday	Saturday
	<b>1</b> <b>CHURCH</b> <b>OFFICE &amp; P&amp;L</b> <b>CLOSED</b>  <b>7:30 PM</b> A.A. & Al Anon	<b>2</b> <b>4-9:00 PM</b> Music Lessons	<b>3</b> <b>10:00 AM</b> Midweek Connections <b>11:00 AM</b> Music Lessons <b>4-6:00 PM</b> Food Pantry <b>4-7:00 PM</b> Music Lessons	<b>4</b> <b>9:00 AM</b> Adult Ed Team <b>2:00 PM</b> Staff Meeting <b>6:00 PM</b> Outreach Team <b>6:00 PM</b> Handbells <b>7:15 AM</b> Vocal Choir	<b>5</b> <b>4:00 PM</b> Piano Practice	<b>6</b> <b>10:00 AM</b> Prepare sanctuary for Epiphany <b>11:00 AM</b> IYK Choir
<b>7</b> <b>9:00 AM</b> Blood Pressure <b>9:30 AM</b> Worship <b>NOISY OFFERING</b> <b>10:45 AM</b> Blood Pressure <b>11:00 AM</b> Education <b>1:00 PM</b> IYK Worship <b>4:00 PM</b> <b>Concert</b>	<b>8</b> <b>8:00 AM</b> Reflections <b>1:30 PM</b> Prayer Shawl Ministry <b>6:00 PM</b> P&L Committee <b>7:30 PM</b> Youth & Family <b>7:30 PM</b> A.A. & Al Anon	<b>9</b> <b>9:30 AM</b> P&L Chapel <b>4-9:00 PM</b> Music Lessons <b>7:00 PM</b> Pub Theology	<b>10</b> <b>10:00 AM</b> Midweek Connections <b>11:00 AM</b> Music Lessons <b>4-6:00 PM</b> Food Pantry <b>4-7:00 PM</b> Music Lessons <b>7:00 PM</b> Worship Ministry Team	<b>11</b> <b>2:00 PM</b> Staff Meeting <b>6:00 PM</b> Handbells <b>7:15 AM</b> Vocal Choir	<b>12</b> <b>4:00 PM</b> Piano Practice	<b>13</b> <b>8:00 AM</b> Men's Breakfast <b>11:00 AM</b> IYK Choir <b>6:30 PM</b> Game Night for all ages
<b>14</b> <b>9:30 AM</b> Worship/Installation <b>11:00 AM</b> Education <b>1:00 PM</b> IYK Worship <b>NEWSLETTER DEADLINE</b>	<b>15</b> <b>8:00 AM</b> Reflections <b>7:00 PM</b> Congregation Council <b>7:30 PM</b> A.A. & Al Anon	<b>16</b> <b>9:30 AM</b> P&L Chapel <b>4-9:00 PM</b> Music Lessons	<b>17</b> <b>10:00 AM</b> Midweek Connections <b>11:00 AM</b> Music Lessons <b>4-6:00 PM</b> Food Pantry <b>4-7:00 PM</b> Music Lessons	<b>18</b> <b>2:00 PM</b> Staff Meeting <b>6:00 PM</b> Handbells <b>7:15 AM</b> Vocal Choir	<b>19</b> <b>4:00 PM</b> Piano Practice	<b>20</b> <b>11:00 AM</b> IYK Choir
<b>21</b> <b>9:30 AM</b> Worship <b>11:00 AM</b> Education <b>1:00 PM</b> IYK Worship	<b>22</b> <b>8:00 AM</b> Reflections <b>7:30 PM</b> A.A. & Al Anon	<b>23</b> <b>9:30 AM</b> P&L Chapel <b>4-9:00 PM</b> Music Lessons <b>7:00 PM</b> Gethsemane Gabs	<b>24</b> <b>10:00 AM</b> Midweek Connections <b>11:00 AM</b> Music Lessons <b>4-6:00 PM</b> Food Pantry <b>4-7:00 PM</b> Music Lessons	<b>25</b> <b>2:00 PM</b> Staff Meeting <b>6:00 PM</b> Handbells <b>7:15 PM</b> Vocal Choir	<b>26</b> <b>4:00 PM</b> Piano Practice	<b>27</b> <b>11:00 AM</b> IYK Choir  <b>TBD</b> Highschool Lock-In
<b>28</b> <b>9:30 AM</b> Worship <b>11:00 AM</b> Education <b>1:00 PM</b> IYK Worship	<b>29</b> <b>8:00 AM</b> Reflections <b>7:30 PM</b> A.A. & Al Anon	<b>30</b> <b>9:30 AM</b> P&L Chapel <b>4-9:00 PM</b> Music Lessons <b>7:00 PM</b> Book Group	<b>31</b> <b>10:00 AM</b> Midweek Connections <b>11:00 AM</b> Music Lessons <b>4-6:00 PM</b> Food Pantry <b>4-7:00 PM</b> Music Lessons	